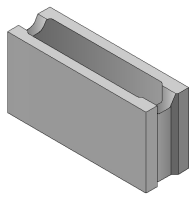
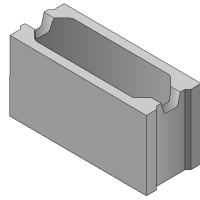


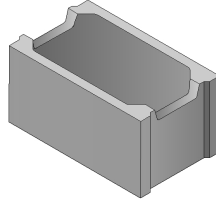
FORMWORK



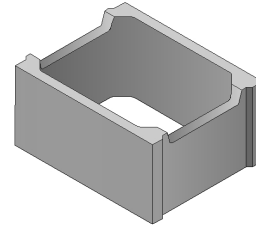
ZB 15



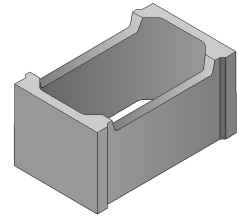
ZB 20



ZB 30



ZB 40

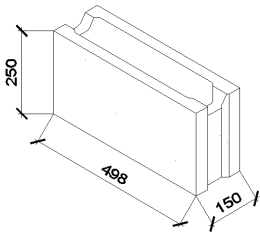


ZB 50

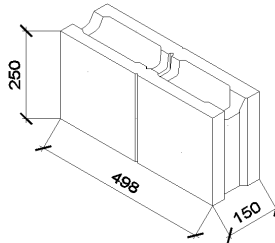
FORMWORK is used for building foundations, walls bearing walls, pits, cellars, fencing, retaining walls without the use of formwork. Concreting can create a simple design of reinforced concrete and having a thickness of 150, 200, 300, 400 and 500 mm. Watering is performed carefully and smoothly reasonably thin concrete mixture in layers up to a height of 4 layers of shell elements at once ie. 1 m height of the wall. Within these parameters, there is no need of wall formwork elements anchored to the foundation against lifting (floating), respectively. intensifying pressure to rupture the dressing concrete. Each palette contains five pieces of bricks intended for halving. Bisection is done by cutting with an angle grinder and a diamond wheel.

Technical drawing – production dimensions (mm)

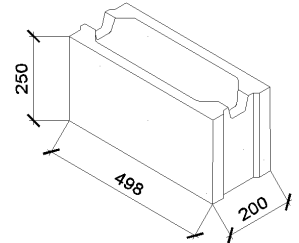
ZB 15



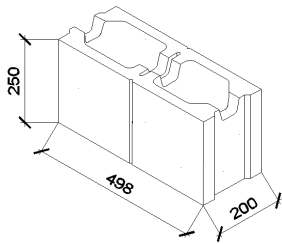
ZB 15 – half



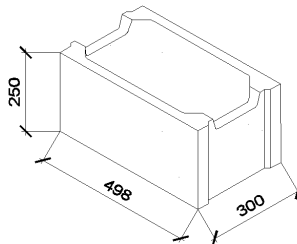
ZB 20



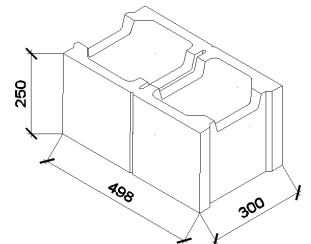
ZB 20 – half



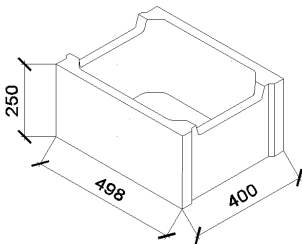
ZB 30



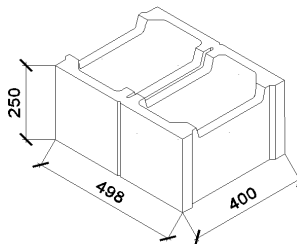
ZB 30 – half



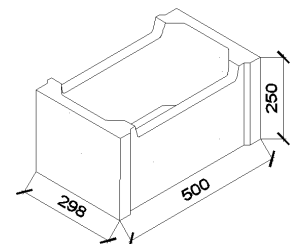
ZB 40



ZB 40 – half



ZB 50



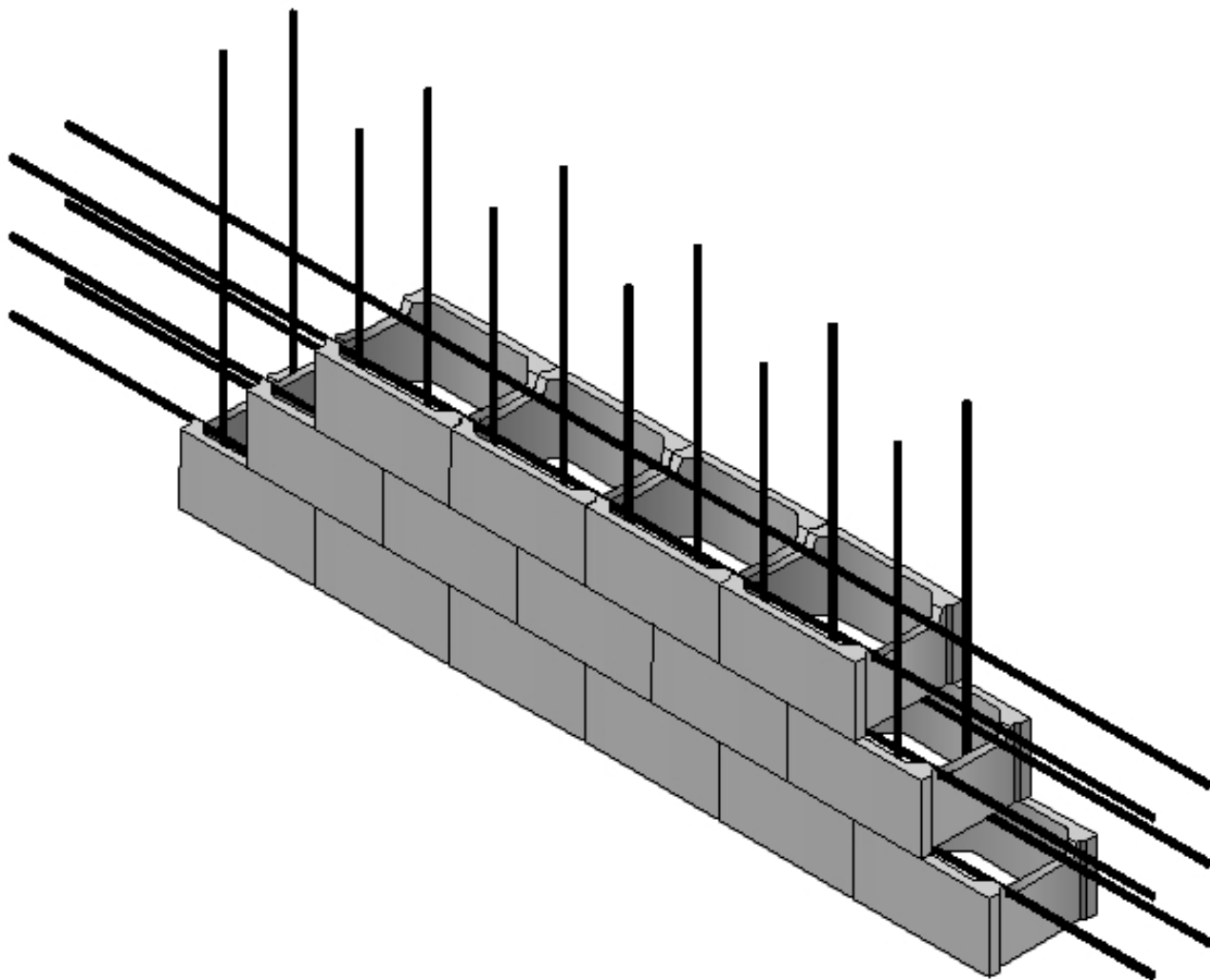
Dimensions and weight are

Title	Production dimensions (mm)			Number	Palette	Ks	Weight (kg)
	Height	Lenght	Widht	Ks/m ² ; Ks/m ³	ks	kg	Palette
FORMWORK 15	250	500	150	8/53	64	21	1369
FORMWORK 20	250	500	200	8/40	60	25	1525
FORMWORK 30	250	500	300	8/27	40	28	1145
FORMWORK 40	250	500	400	8/20	30	33	1015
FORMWORK 50	250	300	500	13,3/27	40	28	1145

Volumes of concrete for the dressing FORMWORK

Title	Full		Half	
	Cubature in l	Cubature in m ³	Cubature in l	Cubature in m ³
FORMWORK 15	8,5	0,0085	7,5	0,0075
FORMWORK 20	14	0,0140	11,5	0,0115
FORMWORK 30	25	0,0250	21	0,0210
FORMWORK 40	36	0,0360	30	0,030
FORMWORK 50	25	0,0250		

Technical recommendations in the implementation of



Example nesting reinforcement and FORMWORK

Comment

- When implementing a variety of wall height, must be taken in respect to the burden on the wall and the local geological conditions. It is always necessary to prove static report, which will determine the degree of reinforcement steel grade, the class of the dressing for the use of concrete walls.

Technical Specifications

FORMWORK – vibropressed concrete product that provides the following benefits:

- high strength
- durability

STANDARDS AND APPROVALS

Concrete products DITON are manufactured and tested in accordance with COMPANY STANDARDS SUBJECT, according to European harmonized standards.



CERTLINE

ČSN EN ISO 9001:2009



CERTLINE

ČSN EN ISO 14001:2005



CERTLINE

ČSN OHSAS 18001:2008

This product was manufactured by DITON Ltd. whose management systems meet the requirements of the above standards, which have been validated by an independent company CERTLINE.